



2023-24 |

## Table of Contents

Who We Are ----- 4

By the Numbers -----5

### Master's Program Offerings

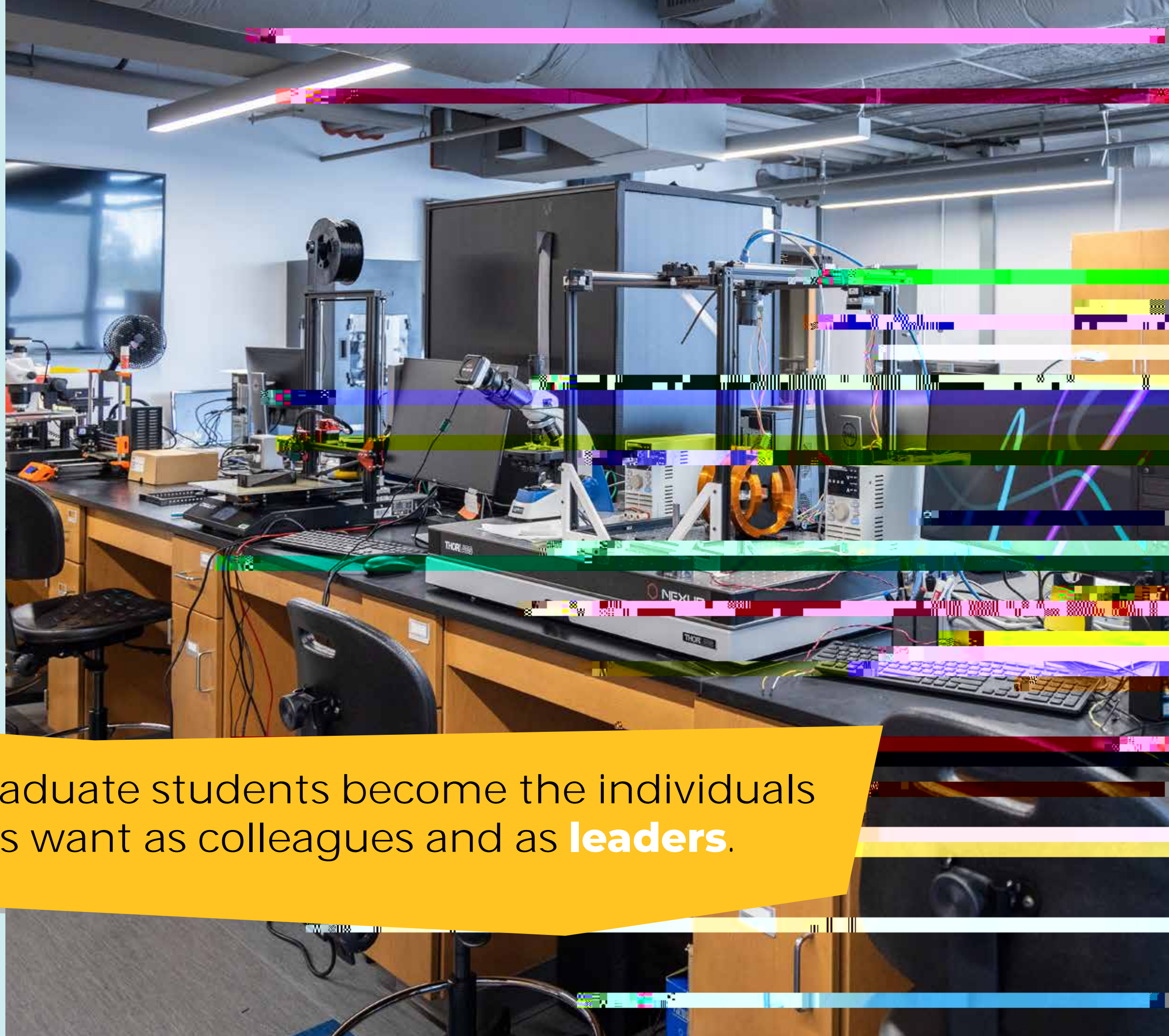
Business ----- 6

Engineering -----7

Health and Human Services ----- 8

Lab Sciences ----- 9

Management-----



At KSU, graduate students become the individuals that others want as colleagues and as **leaders**.

# Who We Are

The Graduate College works alongside stakeholders to find ways to increase graduate enrollment and student retention rates by anticipating the needs of the University's graduate programs, raising the quality and accountability in graduate education, improving financial support, and fostering professional development. From processing graduate applications to guiding students toward the completion of their degrees, the Graduate College staff supports students' academic progress along the way.



# Flexible, Ranked Graduate Degrees and Programs

Kennesaw State University offers a variety of graduate programs that provide students with the opportunity to develop advanced skills and knowledge in their chosen fields. As an R2 institution, Kennesaw State University is committed to research excellence and offers a range of graduate research opportunities. These opportunities allow graduate students to work alongside faculty members on cutting-edge research projects and contribute to the creation of new knowledge in their respective fields.





As a graduate student at Kennesaw State, you get unparalleled support, access to innovative resources and opportunities to expand your academic and professional goals. At the Graduate College, we assist your journey from program selection to graduation and throughout your current and future career choices.

## Mission

The Graduate College advances Kennesaw State University's graduate mission through strategic development, refinement, and stewardship of distinctive, relevant, and quality graduate programs serving students and society. The Graduate College guides, enables, and ensures innovation, growth, and expectation in graduate education. We seek to advance knowledge and educate individuals, enriching and empowering them to achieve lives of purpose and meaningful contribution.

## Vision

We will be one of the most innovative graduate colleges in the nation, aspiring to raise Kennesaw State University to be an exemplar of strategic purpose, practice, efficiency and relevance in graduate education while compellingly demonstrating the advantages of graduate education for individuals and society.

 Graduate and Professional Programs	 On Campus, Online, and Hybrid learning available	 4,541 Graduate Students Fall 2023 Enrollment	 1,977 Graduate Degrees Conferred in Academic Year 2022-2023
---	---	--	---





# Health and Human Services

## | Offerings

**Program Format:** Face-to-Face

**Credit Hours:** 36 Total Hours

**Entry Terms:** Fall, Spring

**Curriculum:** Flexible

**Application Deadlines:**  
Fall, July 1st

# Management | Offerings

# Social Sciences, Art, and Humanities | Offerings

**Program Format:** Face-to-Face  
**Credit Hours:** 30 Total Hours  
**Entry Terms:** Fall  
**Curriculum:** Flexible  
**Application Deadlines:**  
 Fall Priority, January 15th  
 Fall, July 1st

**MBA Business Administration**  
**Program Format:** Face-to-Face  
**Credit Hours:** 36 Total Hours  
**Entry Terms:** Fall, Spring  
**Curriculum:** Flexible  
**Application Deadlines:**  
 Fall, July 1st  
 Spring, November 1st  
 Summer, April 1st

**MA American Studies**  
**Program Format:** Hybrid  
**Credit Hours:** 30 Total Hours  
**Entry Terms:** Fall, Spring, Summer  
**Curriculum:** Flexible  
**Application Deadlines:**  
 Fall, July 1st  
 Spring, November 1st  
 Summer, April 1st

**MA Art and Design**  
**Program Format:** Online  
**Credit Hours:** 30 Total Hours  
**Entry Terms:** Fall  
**Curriculum:** Flexible  
**Application Deadlines:**  
 Priority, February 1st  
 Final, May 1st

**MS Criminal Justice**  
**Program Format:** Online, Hybrid, Face-to-Face  
**Credit Hours:** 33-36 Total Hours  
**Entry Terms:** Fall, Spring  
**Curriculum:** Flexible  
**Application Deadlines:**  
 Fall, July 1st  
 Spring, November 1st

**MS Construction Management**  
**Program Format:** Face-to-Face  
**Credit Hours:** 36 Total Hours  
**Entry Terms:** Fall, Spring  
**Curriculum:** Flexible  
**Application Deadlines:**  
 Fall, July 1st  
 Spring, November 1st

**MS Engineering Management**  
**Program Format:** Online  
**Credit Hours:** 36 Total Hours  
**Entry Terms:** Fall  
**Curriculum:** Flexible  
**Application Deadlines:**  
 Fall, July 1st

**MS Healthcare Management and Informatics**  
**Program Format:** Hybrid  
**Credit Hours:** 36 Total Hours  
**Entry Terms:** Fall  
**Curriculum:** Flexible  
**Application Deadlines:**  
 Fall, August 1st

**MS Conflict Management**  
**Program Format:** Hybrid  
**Credit Hours:** 36 Total Hours  
**Entry Terms:** Fall  
**Curriculum:** Flexible  
**Application Deadlines:**  
 Priority, March 1st  
 Fall, July 1st

**MA Integrated Global Communications**  
**Program Format:** Hybrid  
**Credit Hours:** 30 Total Hours  
**Entry Terms:** Fall, Spring  
**Curriculum:** Flexible  
**Application Deadlines:**  
 Fall, June 1st  
 Spring, November 1st

**MS International Policy Management**  
**Program Format:** Online  
**Credit Hours:** 30 Total Hours  
**Entry Terms:** Fall  
**Curriculum:** Structured  
**Application Deadlines:**  
 Fall, July 1st

**MPA Public Administration**  
**Program Format:** Online  
**Credit Hours:** 30 Total Hours  
**Entry Terms:** Fall, Spring, Summer  
**Curriculum:** Flexible  
**Application Deadlines:**  
 Fall, July 1st  
 Spring, November 1st  
 Summer, April 1st

**MS Systems Engineering**  
**Program Format:** Online  
**Credit Hours:** 30 Total Hours  
**Entry Terms:** Fall, Spring, Summer  
**Curriculum:** Flexible  
**Application Deadlines:**  
 Fall, July 1st  
 Spring, November 1st  
 Summer, April 1st

**MA Professional Writing**  
**Program Format:** Hybrid  
**Credit Hours:** 36 Total Hours  
**Entry Terms:** Fall, Spring  
**Curriculum:** Flexible  
**Application Deadlines:**  
 Fall, July 1st  
 Spring, November 1st

**MPA Public Administration**  
**Program Format:** Hybrid  
**Credit Hours:** 36 Total Hours  
**Entry Terms:** Fall, Spring  
**Curriculum:** Flexible  
**Application Deadlines:**  
 Fall, July 1st  
 Spring, November 1st  
 Summer, April 1st  
*Externally accredited NASPA accreditation*

# Dual Degrees | Offerings

## **Business Administration and Social Work: MBA/MSW**

The objective of this dual degree program is to create future leaders and change agents who create "social value" by focusing on the triple-bottom line and initiate purposeful "social change."

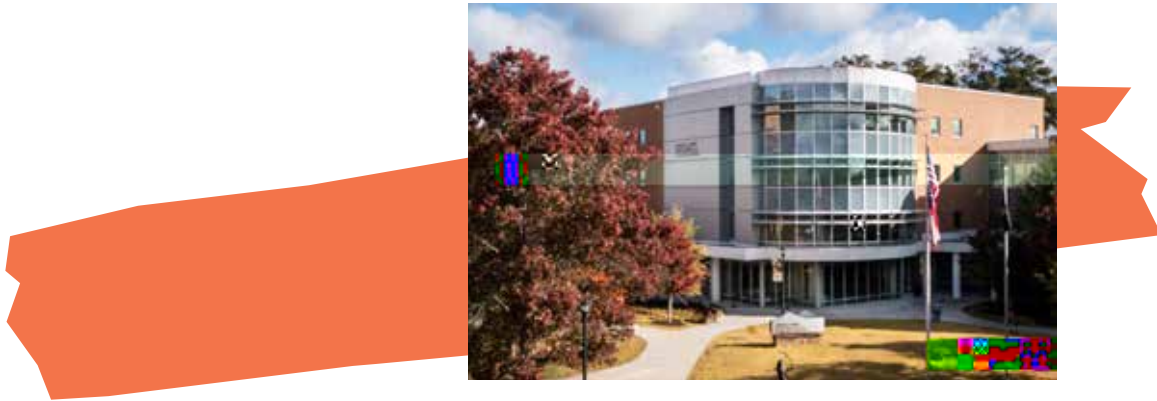


**Elementary & Early Childhood Education: M.Ed.**

The M.Ed. in Elementary and Early Childhood Education is for certified and practicing P-5 teachers who want to increase their expertise in Elementary Education and improve their teaching practice. The program allows certified Elementary educators to earn their M.Ed. in 13 months while continuing their teaching career.

**Instructional Technology: M.Ed. and Ed.D.**

This degree prepares candidates to effectively integrate technology into the classroom and to serve as technology coaches/facilitators in P-12 schools, utilize technology to support



Never Stop Learning...  
**DEGREE UP**  
at Kennesaw State University!



# Doctoral Offerings

## Business Administration, Ph.D.

The Ph.D. in Business Administration is an innovative doctoral program designed to prepare highly experienced professionals for teaching and research positions at AACSB accredited business schools or for advanced research positions in consulting, government or industry while maintaining your full-time job.

## Computer Science, Ph.D.

The innovative Computer Science Ph.D. program blends the highest level of theory and practice in Computer Science, Information Technology and Software Engineering to solve research and real-world problems. The curriculum is designed to prepare you for a career as a cutting-edge researcher, an experienced educator or workforce professional who can meet current and projected market demands for technological advancements in computing.

## Data Science and Analytics, Ph.D.

The Data Science and Analytics Doctorate program is creating the next generation of data science and analytics leaders. The curriculum includes emphasis on programming, statistical modeling, mathematical foundations, oral and written communication skills. Students will work directly with industry partners and researchers to solve real problems.

## Interdisciplinary Engineering, Ph.D.

The Ph.D. in Interdisciplinary Engineering will challenge you to work

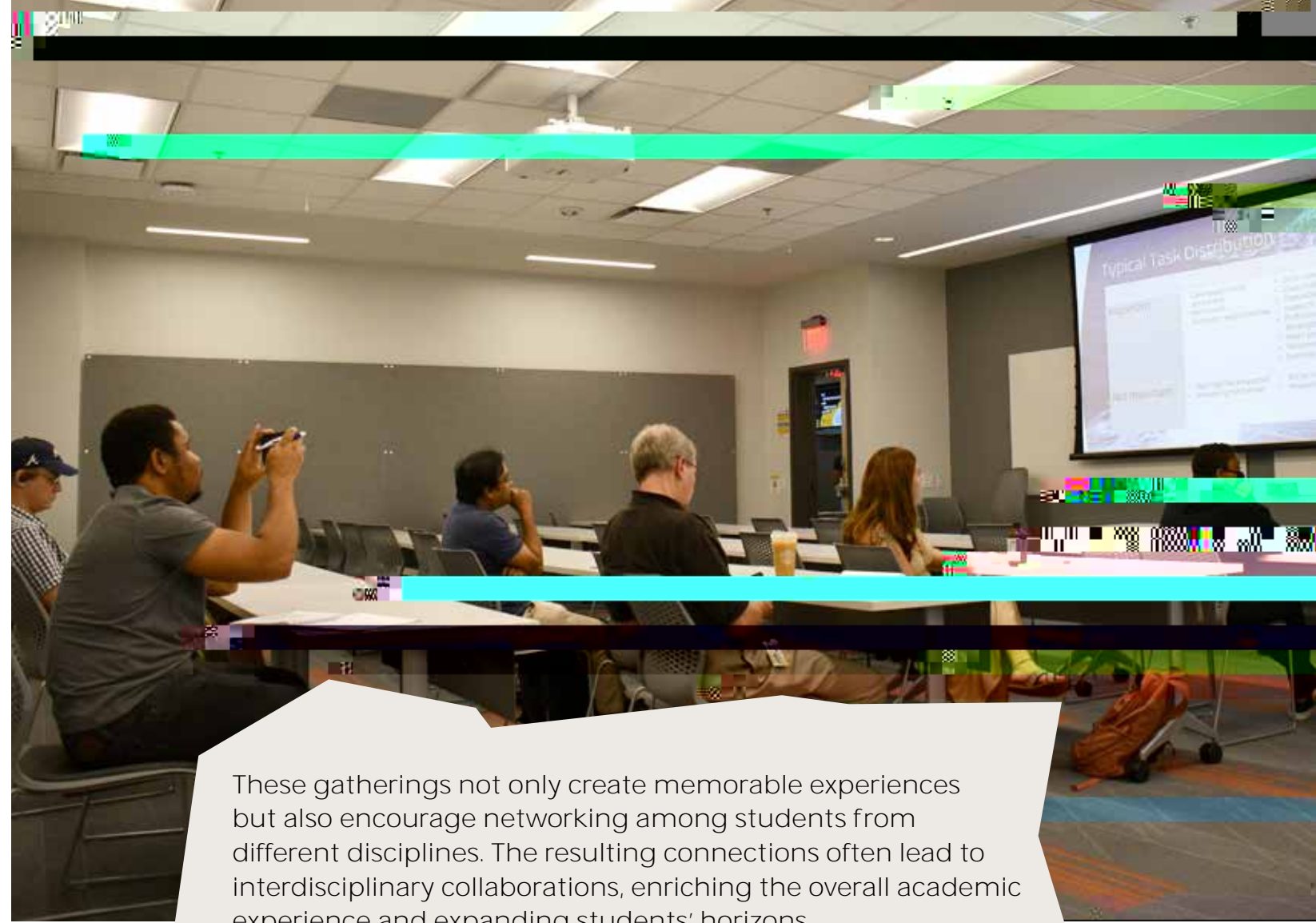
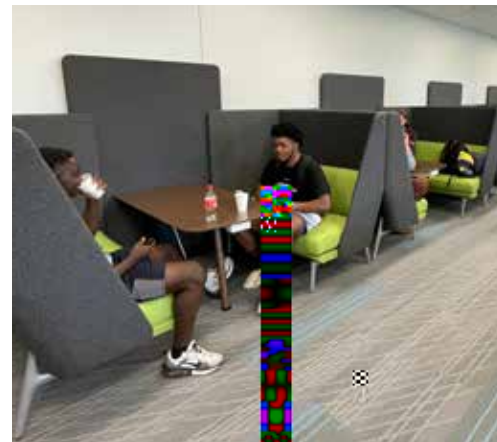
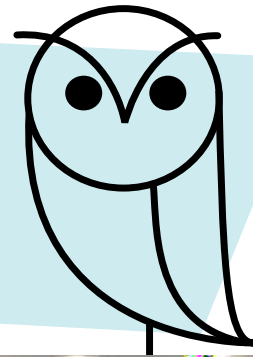
with interdisciplinary teams to solve real-world problems. The program is designed to prepare you for a career as a cutting-edge researcher, an experienced educator or workforce professional who can meet current and projected market demands for technological advancements in computing.



engaging presentations, emphasizing the importance of effective communication. The 3MT competition not only hones students' presentation skills but also provides a platform for them to share their groundbreaking research with a wider audience, fostering an environment of scholarly excellence.

Central to the graduate student experience are the thoughtfully designed student success centers, which serve as dynamic hubs of productivity and collaboration. These student lounges, equipped with modern facilities and comfortable seating, offer a serene environment for study, as well as an open arena for brainstorming sessions and group projects. They cater to the diverse needs of graduate students, providing spaces that enhance their learning journey and facilitate academic growth.

Recognizing that a well-rounded graduate student experience goes beyond academics, KSU hosts a range of social events each semester that breathe life into the campus. From sophisticated wine and cheese socials that stimulate intellectual conversations to practical seminars that equip students with essential skills for their academic journey, such as literature review for theses and dissertations, and lectures on time management and motivation.



These gatherings not only create memorable experiences but also encourage networking among students from different disciplines. The resulting connections often lead to interdisciplinary collaborations, enriching the overall academic experience and expanding students' horizons.

Kennesaw State University's commitment to a vibrant graduate student life underscores its dedication to holistic education. By creating spaces for intellectual exploration, fostering social connections, and promoting active engagement in research, the university ensures that its graduate students emerge as well-rounded individuals who are ready to make meaningful contributions to their respective fields.

**Clarice C. & Leland H. Bagwell College of Education**

**College of Architecture and Construction Management**

**College of Computing and Software Engineering**

**College of Engineering and Engineering Technology**

**College of Science and Mathematics**

**College of the Arts**

**Michael J. Coles College of Business**

**Norman J. Radow College of Humanities and Social Sciences**

**Wellstar College of Health and Human Sciences**



3391 Town Point Dr NW  
Suite 1700  
Kennesaw, GA 30144  
470-578-4377

**[ksugrad@kennesaw.edu](mailto:ksugrad@kennesaw.edu)**  
**[graduate.kennesaw.edu](http://graduate.kennesaw.edu)**